

First Presbyterian Hand-in-Hand Early Learning Center

For registration information,
questions or to arrange a visit,
please contact:

Heidi Wilkinson, Director
248.644.2040 ext.124
Email:
handinhand@everybodyschurch.org

Or visit the church website:
www.everybodyschurch.org

The Vision of First Presbyterian Church
*As Everybody's Church, we commit ourselves
to serving Christ by cultivating mission,
inclusion and community.*

1669 W. Maple Road
Birmingham, MI 48009



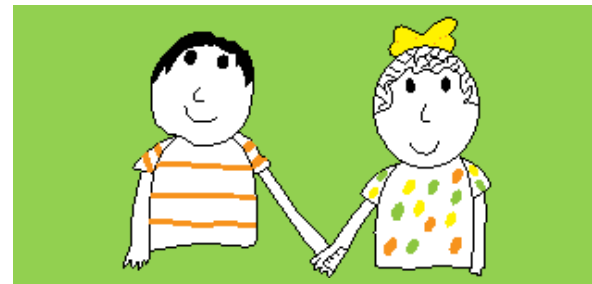
First Presbyterian Hand-in-Hand
Early Learning Center
1669 W. Maple Road
Birmingham, MI 48009

First Presbyterian Hand-in-Hand Early Learning Center



4 Months Through Five Years

**Where Play and Learning
Go Hand-in-Hand**



OUR MISSION

We are committed to providing a quality program within a safe, nurturing environment.

Our curriculum encourages and promotes the intellectual, social, cognitive, emotional and physical development of young children.



FACILITY/TEACHERS

The First Presbyterian Hand-in-Hand Early Learning Center is a licensed center established in 1954. We provide a warm, safe and secure space for learning. The center occupies a wing of the church and has the use of spacious classrooms with large exterior and interior windows.

Our center follows the Birmingham School District's calendar for vacation periods and school closings due to inclement weather. Our school calendar runs from mid-September through May.

A large outdoor fenced in playground with approved play structures, climbers, a playhouse, a garden and a variety of riding toys is used when weather permits. The center also has the use of a large indoor space.

On average, our professional staff of teachers have been with the center for eight years. Many are certified teachers or have a Child Development Associate Credential. Each teacher is current in First Aid and CPR training certification and all go through state and national background checks.

We are very proud of our experienced, nurturing and caring staff who have a passion for teaching and helping your child achieve excellence.

PROGRAMS

Early Learning Classes (4 months-3 years)

Monday– Friday 9:15-11:45am

Options are one to five days based on availability. The thematic curriculum encourages active learning through hands-on exploration with a strong emphasis on social skills. The morning is structured with self-directed play, circle time, snack, art project, music, reading and recreation. They are taught in age defined rooms with age appropriate curriculum.



Preschool Classes

Three-year-old Preschool

Tuesday and Thursday 9:15-11:45am

Four-year-old Preschool

Monday, Wednesday and Friday 9:15-11:45am

The teacher to student ratio in the preschool classes is kept intentionally lower than required which allows for more individualized attention. The daily program features small and large group and self-directed activities geared for kindergarten readiness.

Handwriting without tears is taught in both preschool classrooms. Special projects include a variety of art experiences, cooking, science, readiness skills, units for exploring the world around us, our family/ourselves, health habits and much more. The children have a music class each week with a music teacher and explore concepts through songs, rhythms, instruments and movement. Story time is conducted daily and creatively to foster a love and interest in reading and books. Both classes take two field trips per year.

Enrichment Classes:

Three-year-old Enrichment Classes

Monday, Wednesday and/or Friday
9:15-11:45am

Four-year-old Enrichment Classes

Tuesday and/or Thursday 9:15-11:45am

The three and four-year-old enrichment classes delve deeper into the skills the children are learning in preschool as well as they explore other areas. The curriculum is designed to enrich the preschool experience and introduce other areas in a smaller class size setting. The creative curriculum is aimed at fine tuning and broadening their learning experience prior to the young five program or kindergarten.

Young Fives Program

Monday-Thursday 9:15am-1:15pm and
9:15-11:45am on Friday

This program is structured for children who are not ready for a traditional kindergarten program or those who miss the cut-off date. These children will benefit from another year to develop socially, emotionally, physically and/or cognitively through a comprehensive curriculum aimed at developing each of these areas.

Extended Days

Monday, Tuesday, Wednesday and/or
Thursday 11:45am-1:15pm

Extended days are offered for children age 2-5. They bring their lunch and stay for lunch and recreation!

Mini-Summer Camp

Tuesday-Friday 9:15am-1:15pm

A four day themed camp experience for children 2-5 years held the week following the end of the Center's school year.

Art, Yoga, Gymnastics and Exercise Classes

These are additional classes offered in the afternoon for children age 2 1/2-5 years.